

INTERVALS

An interval is the **distance** between any two pitches.

A HARMONIC interval is two pitches played at the same time.

A MELODIC interval is two pitches played one after the other.

When 2 pitches are BOTH on lines or spaces, they are an **odd-numbered interval** (a 3rd, 5th or 7th).

When 2 pitches are NOT both on lines or spaces (one on a line, and one on a space)
they are an **even-numbered interval**, (a 2nd, 4th, 6th or Octave).

Write a number below each example to show the interval distance between the notes.

Advanced Intervals

Name _____

Steps:

- 1: Locate bottom note, and how far away the top note is: 4th, 5th, Unison, etc.
- 2: Identify the Key of bottom note
- 3: Does the upper note fit in the key?
- 4: If yes, Major or Perfect. If no, Minor (lower), Augmented (bigger than Major), or Diminished (smaller than Minor)

1 EX. D: 2# F#, C#

2

3

4

5

6

7

8

9

10

11

12

13

14

15

16

17

18

19

20

21

22

23

24

25

26

27

28

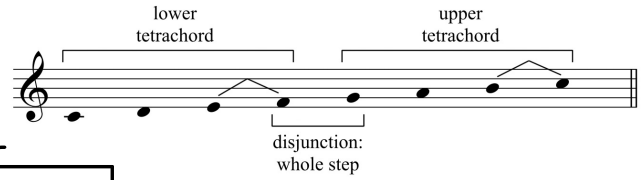
29

30

31

32

Major Scale Construction



Ex. F Major

C Major

D Major

E \flat Major

G Major

A \flat Major

A Major

E Major

B \flat Major

As we start wrapping up the semester, are there any music theory questions you still have or topics you want to learn?
